

$\frac{1}{2} \div \frac{1}{4}$

• Multiply by the reciprocal.
 * (Same, change, flip)

$\frac{1}{2} \times \frac{4}{1} = \frac{4}{2}$

$2 \overline{) 4}$
 $\underline{-4}$
 0

$\frac{4}{2} = 2$

Oct 28-8:55 AM

$\frac{2}{3} \div \frac{4}{9}$

$\frac{2}{3} \times \frac{9}{4} = \frac{18}{12} = 1\frac{1}{2}$

$\frac{2}{3} \div \frac{4}{9}$

$12 \overline{) 18}$
 $\underline{-12}$
 6

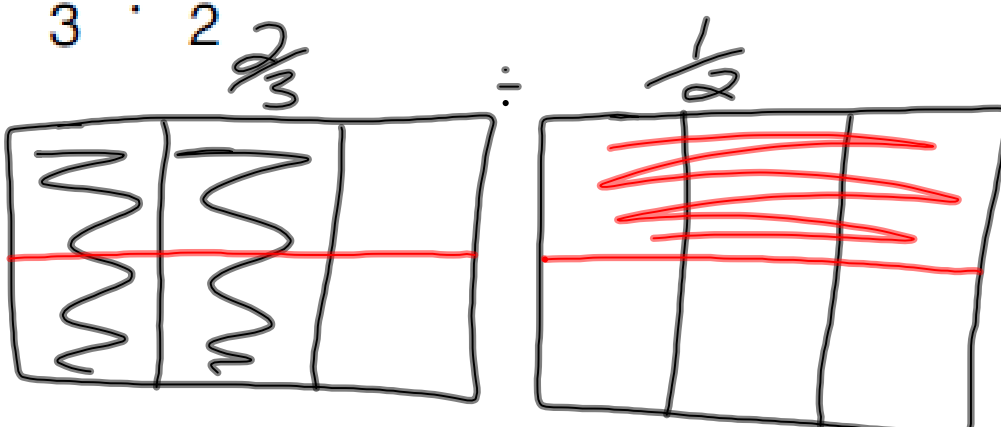
$\frac{18}{12}$

Oct 28-8:55 AM

$$\frac{7}{8} \div 4$$

Oct 28-9:03 AM

$$\frac{2}{3} \div \frac{1}{2}$$



$$\frac{4}{3} = 1\frac{1}{3}$$

Oct 28-9:04 AM

$$\frac{9}{10} \div \frac{3}{4}$$

Oct 28-9:04 AM